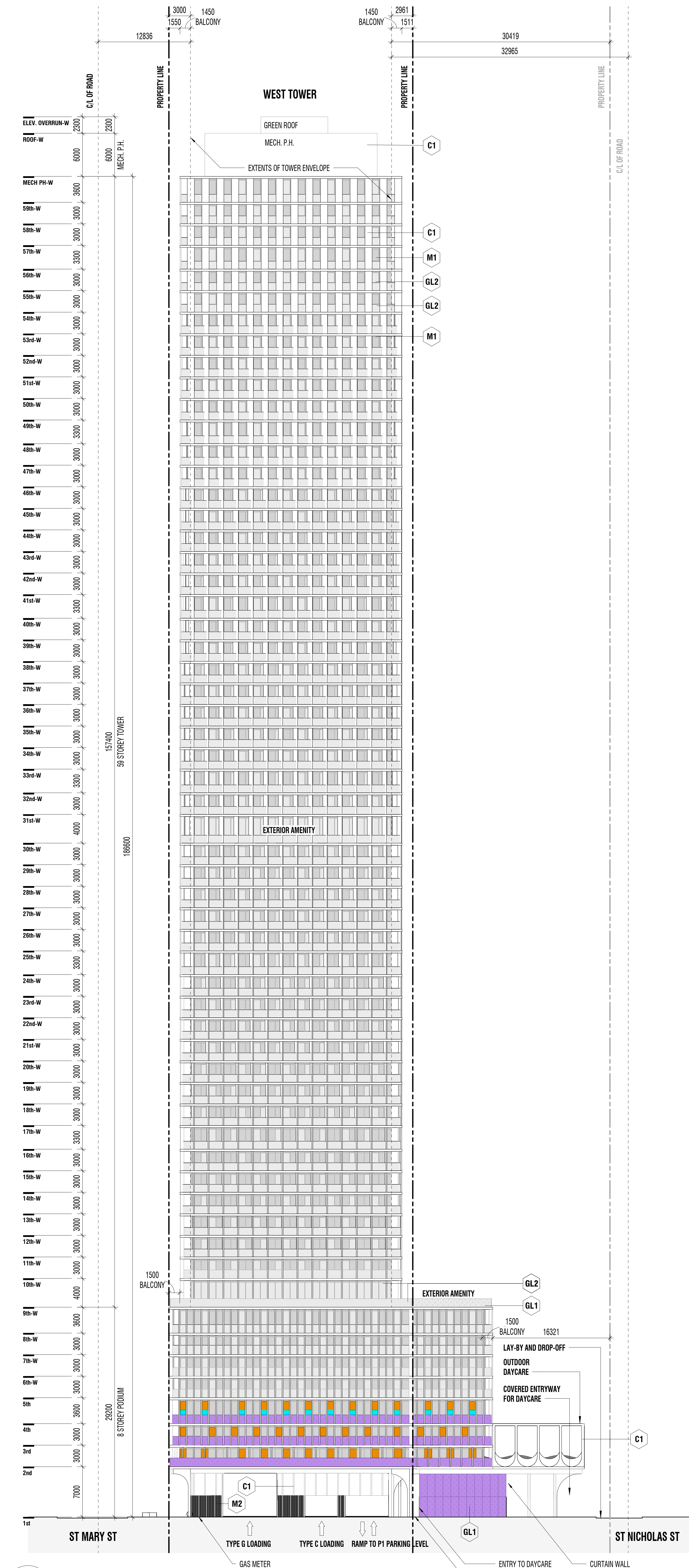




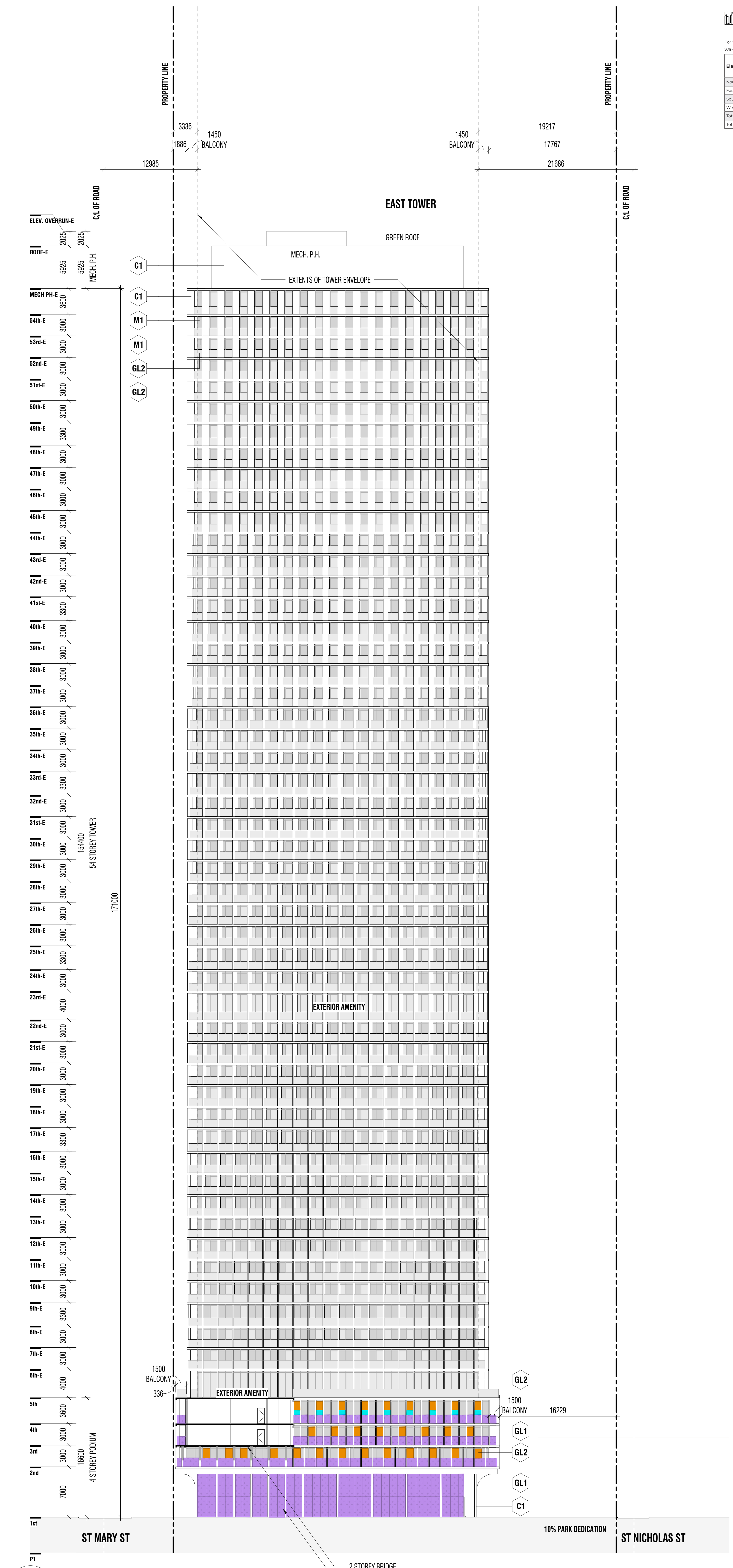
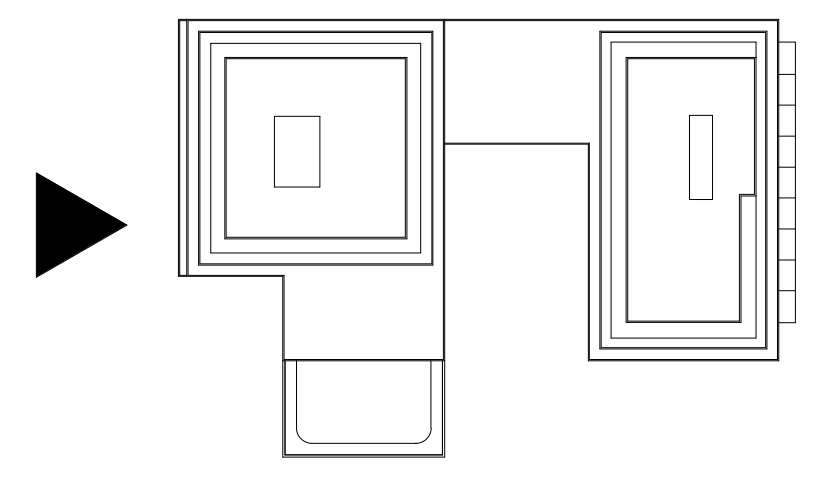
Elevation	Visual Screening	Screen Reflectance (Opaque Materials)	Visual Markers	Shading	Total Treated Area (sqm)	Total Treated Area (%)
North	18.4	0.0	478.0	101.3	579.3	98.8%
East	8.7	0.0	471.5	63.5	535.0	98.4%
South	28.9	0.0	225.2	231.9	457.1	94.1%
West	11.8	0.0	507.0	73.2	580.2	96.7%
Exterior	67.6	0.0	1,683.7	469.9	2,153.6	97.0%
Screen (%)	3.0%	0.0%	75.8%	21.2%		

**MATERIALS LEGEND**

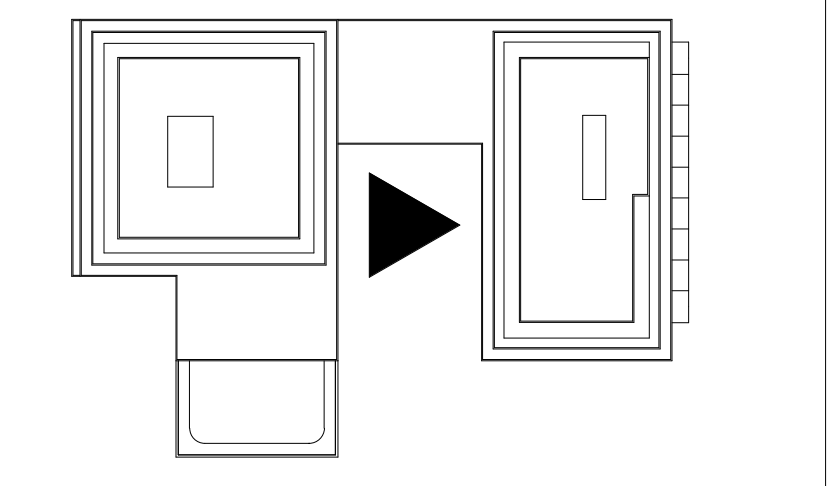
- C1 CONCRETE PANEL
- GL1 GLASS PANEL - NO FRIT
- GL2 GLASS PANEL - NO FRIT
- M1 METAL PANEL - GREY
- M2 METAL LOUVRE - WHITE



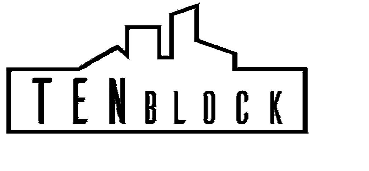
1 WEST ELEVATION 1  
A103 | A301  
1 : 250



2 WEST ELEVATION 2  
A103 | A301  
1 : 250



1 June 7, 2023 Issued for CPA, 20A, 20A  
Rev. Date Issued



gh3  
gh3+  
55 OSSINGTON AVE, SUITE 100  
Toronto, ON, Canada M5J 2Y9  
416 915 1731

TENBLOCK  
25 ST MARY STREET

TORONTO  
Project North True North  
SCALE 1 : 250  
PROJECT NO. 202019  
ISSUE DATE JUNE 7, 2023

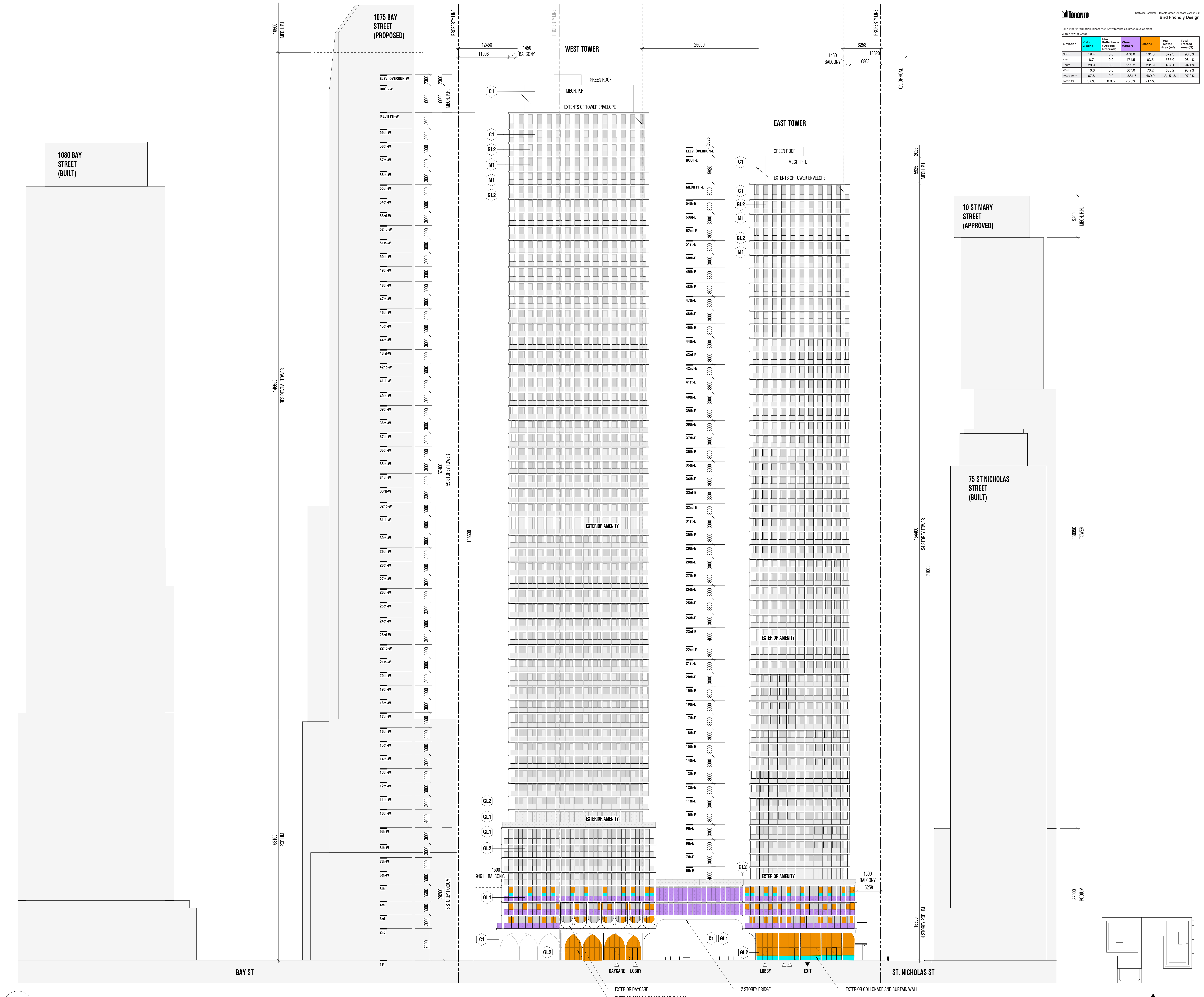
**SITE ELEVATIONS**

A301

For further information, please visit [www.toronto.ca/greendevelopment](http://www.toronto.ca/greendevelopment)  
 Winter 16th of Grade

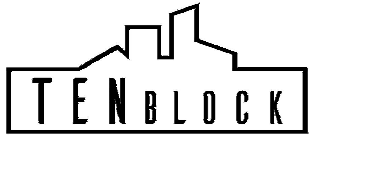
Elevation	Visual Screening	Low Reflectance (Opaque Materials)	Visual Markers	Overhead	Total Projected Area (m <sup>2</sup> )	Total Treated Area (%)
North	19.4	0.0	476.0	101.3	579.3	96.8%
East	8.7	0.0	471.5	53.5	525.0	93.4%
South	28.9	0.0	225.2	231.9	457.1	94.1%
West	10.6	0.0	507.0	73.2	580.2	95.2%
Total (m <sup>2</sup> )	67.6	0.0	1,680.7	460.9	2,181.6	97.0%
Total (%)	3.0%	0.0%	75.6%	21.2%		

- MATERIALS LEGEND**
- C1 CONCRETE PANEL
  - GL1 GLASS PANEL - NO FRIT
  - GL2 GLASS PANEL - NO FRIT
  - M1 METAL PANEL - GREY
  - M2 METAL LOUVRE - WHITE



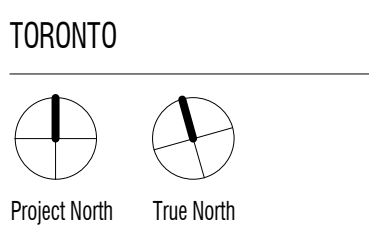
1 SOUTH ELEVATION  
 A103 A302 1:250

1 June 7, 2021 Issued for CPA, 2BA, 2A  
 Rev. Date Issued



gh3  
 gh3\*  
 55 OSSINGTON AVE., SUITE 100  
 Toronto, ON, Canada M5J 2Y9  
 416 915 1791

TENBLOCK  
 25 ST MARY STREET



SCALE 1:250  
 PROJECT NO. 202019  
 ISSUE DATE JUNE 7, 2021

**SITE ELEVATIONS**

A302

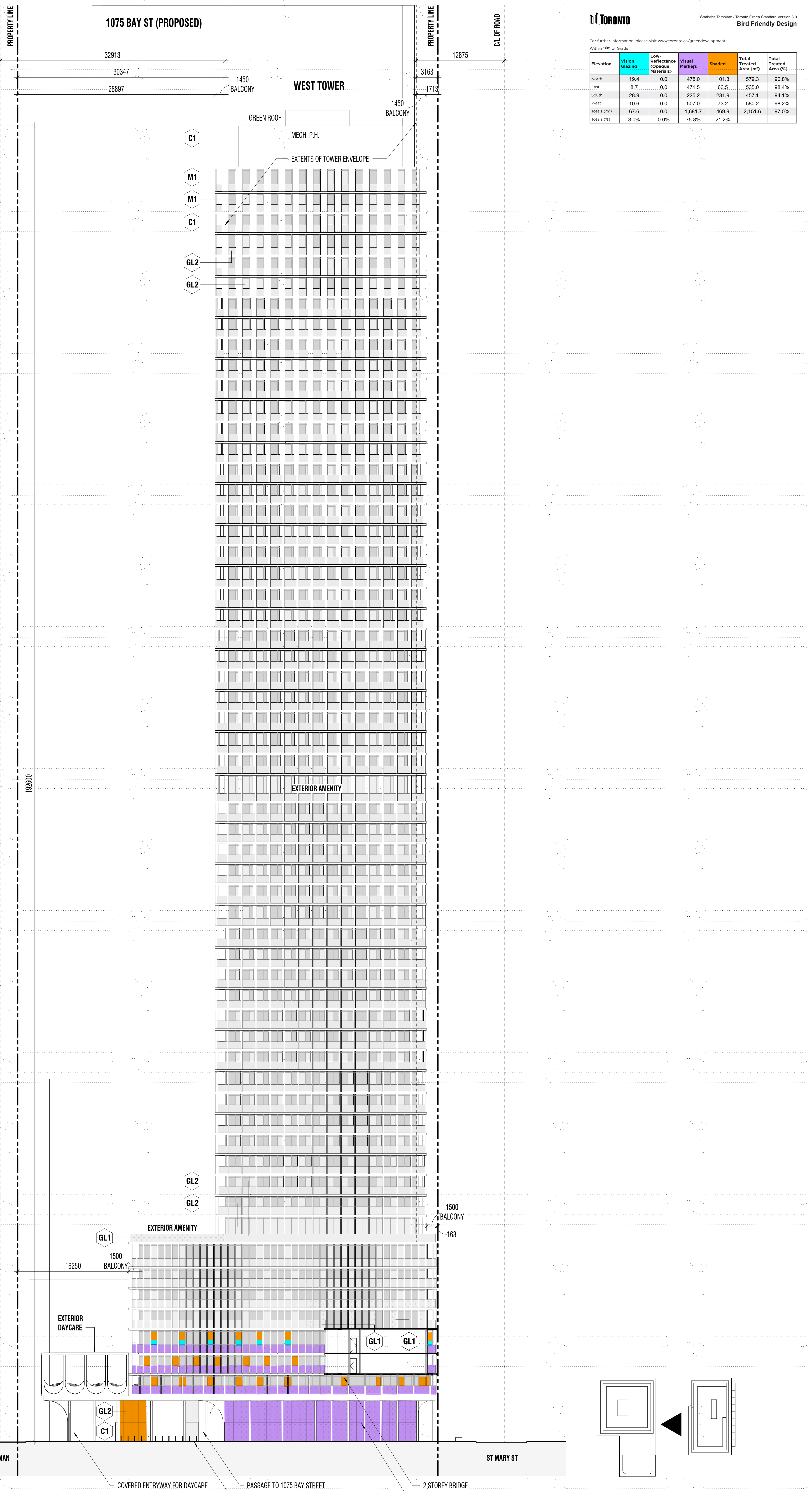
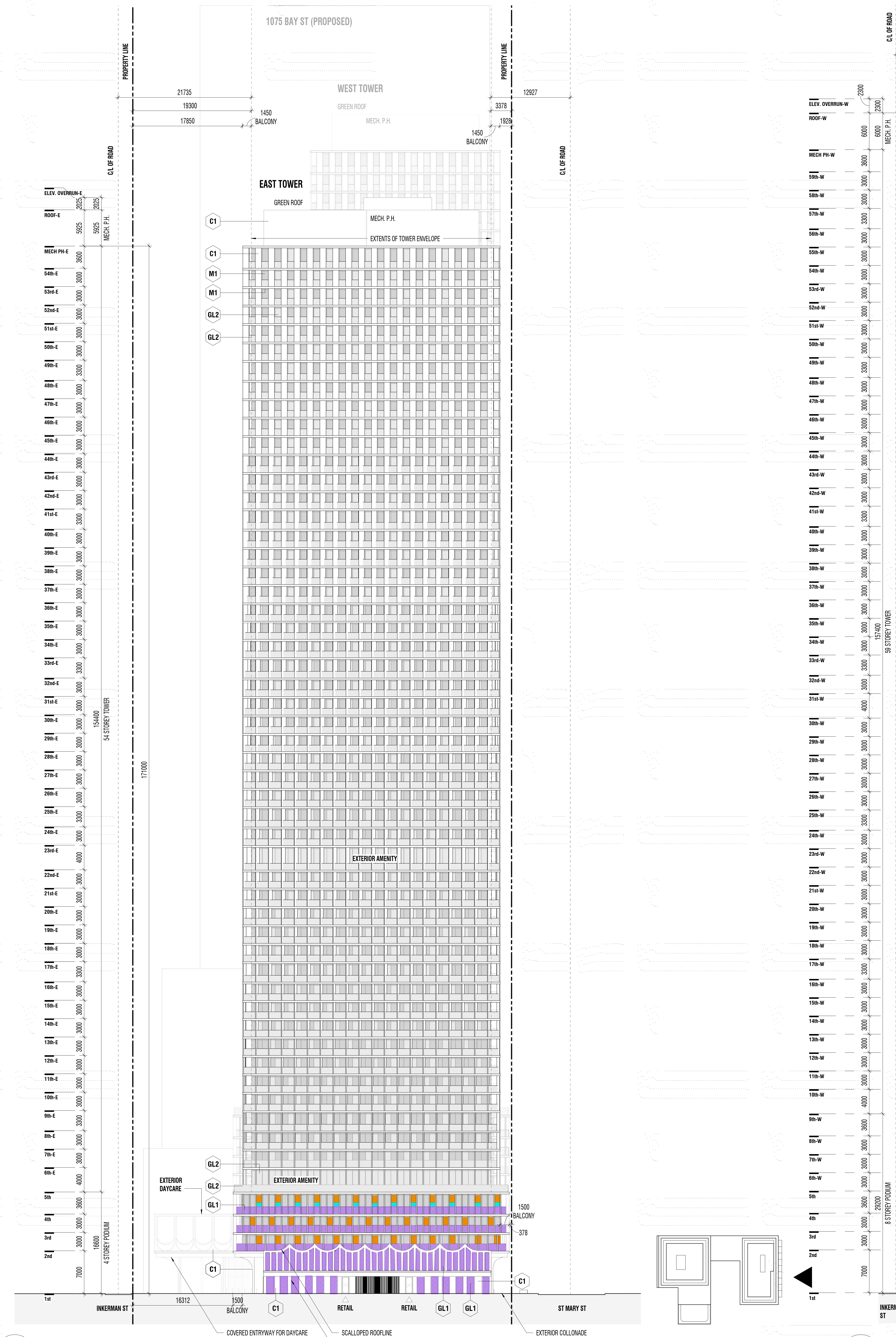
**Toronto** Wildlife Template - Toronto Green Standard Version 3.0  
**Bird Friendly Design**

For further information, please visit [www.toronto.ca/greendevlopment](http://www.toronto.ca/greendevlopment)

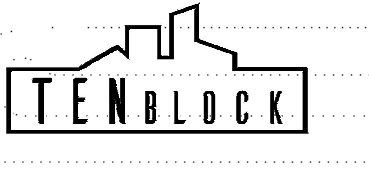
Within 10m of Canopy

Elevation	Visual Quality	Low-Reflectance Coefficient (Material)	Visual Quality	Product	Total Treated Area (m <sup>2</sup> )	Total Treated Area (%)
North	19.4	0.0	478.0	101.3	579.3	96.8%
East	8.7	0.0	471.5	63.5	535.0	98.4%
South	28.9	0.0	225.2	231.9	457.1	94.1%
West	10.6	0.0	507.0	73.2	580.2	99.2%
North	87.6	0.0	1,681.7	408.9	2,150.6	97.6%
Average (%)	3.0%	0.0%	75.8%	21.2%		

- MATERIALS LEGEND**
- C1 CONCRETE PANEL
  - GL1 GLASS PANEL - FRIT
  - GL2 GLASS PANEL - NO FRIT
  - M1 METAL PANEL - GREY
  - M2 METAL LOUVRE - WHITE



1 June 7, 2021 Issued for OPA, IBA, IGA  
 Rev. Date Issued



**gh3**  
 gh3\*  
 55 OSSINGTON AVE, SUITE 100  
 Toronto, ON, Canada M5J 2Y9  
 416 915 1791

TENBLOCK  
 25 ST MARY STREET



Project North True North

SCALE 1: 250  
 PROJECT NO. 202019  
 ISSUE DATE JUNE 7, 2021

**SITE ELEVATIONS**

**A303**